

# EF DELTA

The Ultimate Battery Generator





# The Problems of **Gasoline Generators**



“Stale fuel is the No.1 cause of generator starting problems  
Manufacturers advise adding fuel stabilizer to the gas to minimize  
fuel breakdown, varnish and gum buildup.”

————— Family-Handyman

“Carbon monoxide poisoning sends more than 20,000 people to  
the emergency room each year.”

————— Institute of Standards and Technology

# Why You Need A Battery Powered Generator

## Lightweight & Compact

Compared to gasoline generators, battery generators are more compact and lightweight.

---

## Safely Use indoors

Gasoline generators are loud and emit carbon monoxide. But you can safely use DELTA indoors during power outages or home recreational activities.

---

## Save Time & Money

Maintaining a gasoline generator is expensive and time consuming - typically maintained semi-annually at a cost of \$150 per year. Battery-powered generators require no maintenance.





# The New Standard of Battery-Powered Generator

No Gas / No Noise / No Emissions

---



Recharge from 0  
to 80% in 60 min



2 Years Battery  
Warranty



Up to Six 1800W  
AC Wall Outlets



Universal Solar  
Input



Rigid Structural  
Design



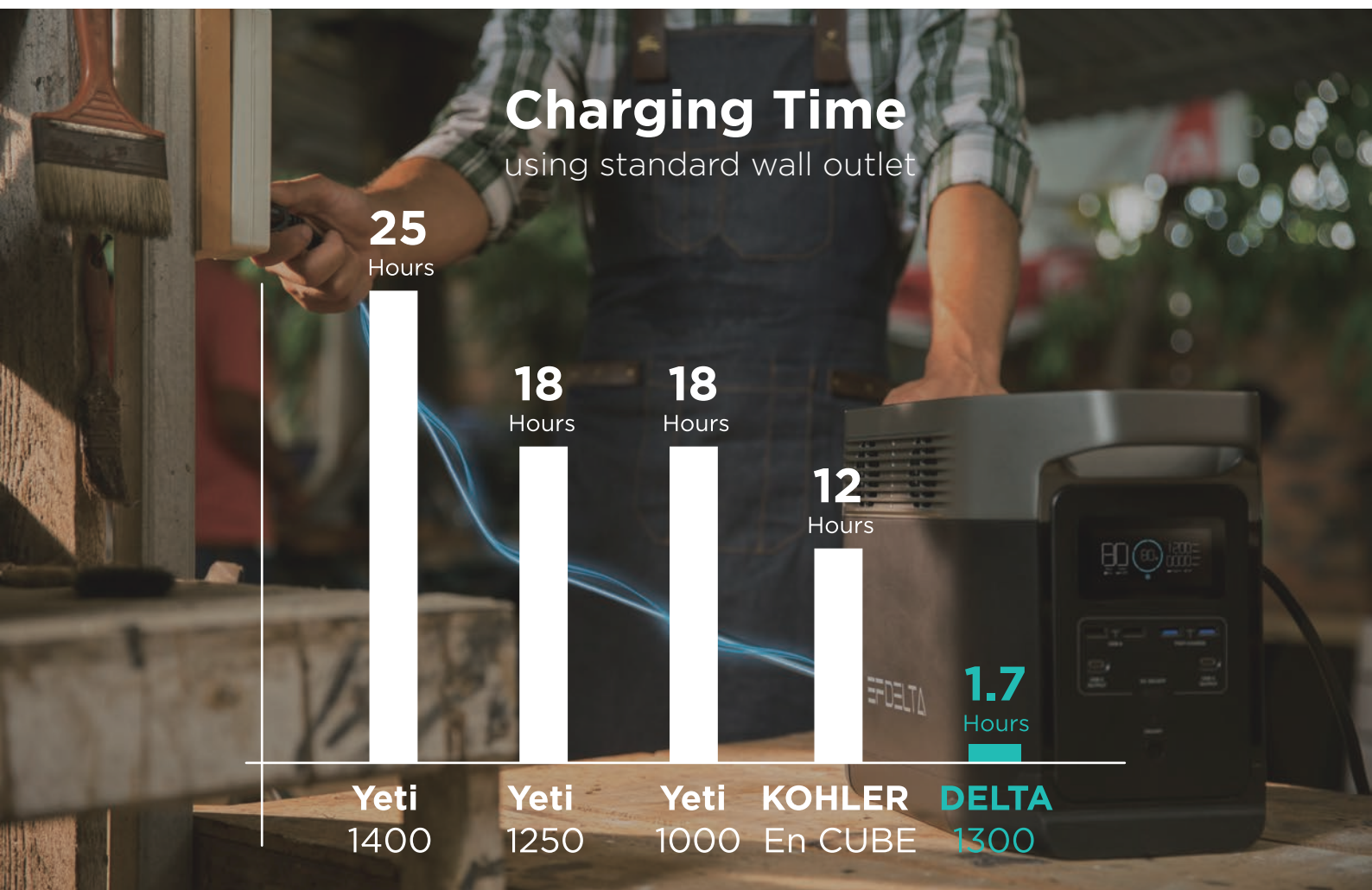
Protective Safety  
Measures



# 1 Hour 0 to 80%

## The Fastest Recharge Rate

For the past two years we've dedicated our time and energy into creating the X-Stream Recharge Technology. This technology provides the fastest recharge rate on the market, working 10x times faster than competing brands of battery-powered generators. This allows DELTA to be fully recharged in under two hours using any regular wall outlet.







# 400W

## Max Solar Input

In perfect sunlight and 400W of solar panels, DELTA can be fully recharged in just four hours.



# 130W

## Max Car Charge Input

DELTA can be fully recharged in just 10 hours.





# Power Your Life



Phone

3Ah

**100+** Times



Fruit Squeezer

150W

**7-9** Hours



Light

10W

**36+** Hours



Refrigerator or Freezer

150W (1200W)

**7-10** Hours



Dishwasher (Cool Dry)

216W(540W)

**4.6-9** Hours



Home Printer

400W

**2.5-5** Hours



Toaster

680 (1200W)

**80-90** Psc



Coffee Maker (4 cup)

150W (1200W)

**50-60** Cups





Fan

40W (120W)  
**22-30** Hours



Laptop

60W  
**14-21** Hours



Rice Cooker

1000W  
**1-3** Hours



Television Flat Screen

120W  
**8-16** Hours



DJ Player

350W  
**2.8+** Hours



Blender

400W  
**2.5-3** Hours



Drone

60Wh  
**14+** Times



Microwave Oven(650 watts)

1000W  
**1-1.8** Hours



Electric Grill

1650W  
**0.6+** Hours



Hair Dryer (1600 watts)

1600W (1900W)  
**0.6-3.3** Hours



Window Air Conditioner

1500W (2200W)  
**0.7-3.3** Hours



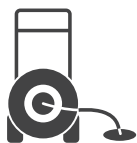
Electric Vehicle(16A)

1800W  
**5-7km/3-4**Miles





# Power Your Work



**Drain Cleaner**

250W

**4-5 Hours**



**Drills 3/8 inch, 4 amps**

900W

**1.1-2.2 Hours**



**High-pressure Washer (1 hp)**

1200W(3200W)

**0.8+Hours**



**Concrete Vibrator**

840W

**1.2-2.4 Hours**



**Rotary Hammer**

1080W

**1-2 Hours**



**Demolition Hammer**

1260W

**0.8-1.6 Hours**



**Bench Grinder**

1400W(2500W)

**0.7-1.4 Hours**



**Circular Saw**

1400W(2300W)

**0.7-1.4 Hours**



**Split Phase 1/8 Horsepower**

275W(1200W)

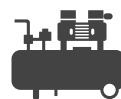
**3.6-7.2 Hours**



**Fan Duty 1/4 Horsepower**

650W(1200W)

**1.5-3 Hours**



**Air Compressor (1 HP)**

975W(1600W)

**1+ Hours**



**Electric Saw**

1100W

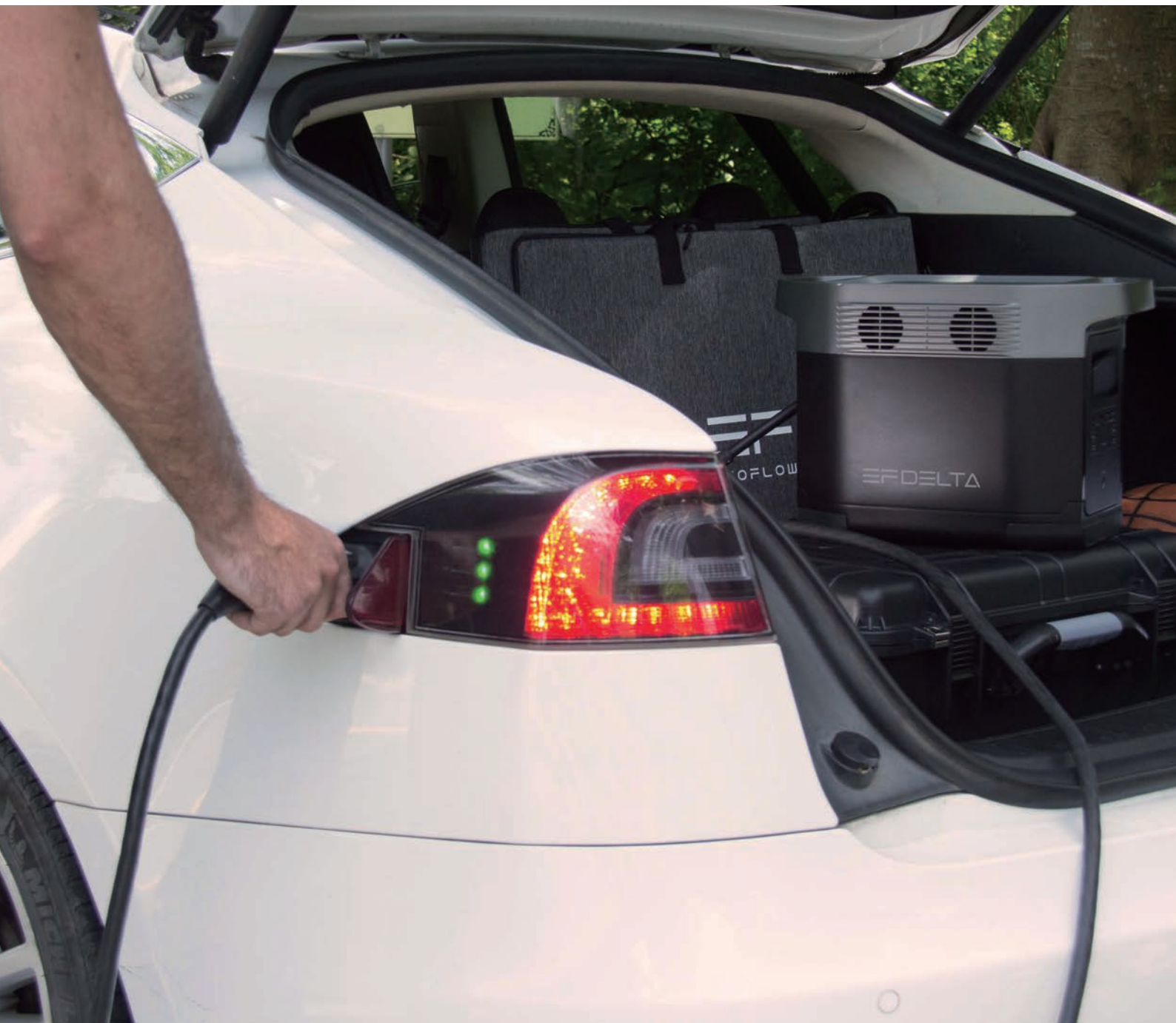
**0.9-1.8 Hours**



# 1800W AC Output

DELTA can charge anything in your household, ranging from your lights to your power tools in your workshop. It can even charge your electric vehicle in case of emergency! With its 1800-watt output, the power station can add 3 to 5 miles of range to an electric vehicle.

---



# Meets The Standard Of Any Wall Outlet

Always Feel Right At Home

2x 28W Fast Charge

2x 12W Fast Charge

2x 60W USB-C

DC ON/OFF

Power Button

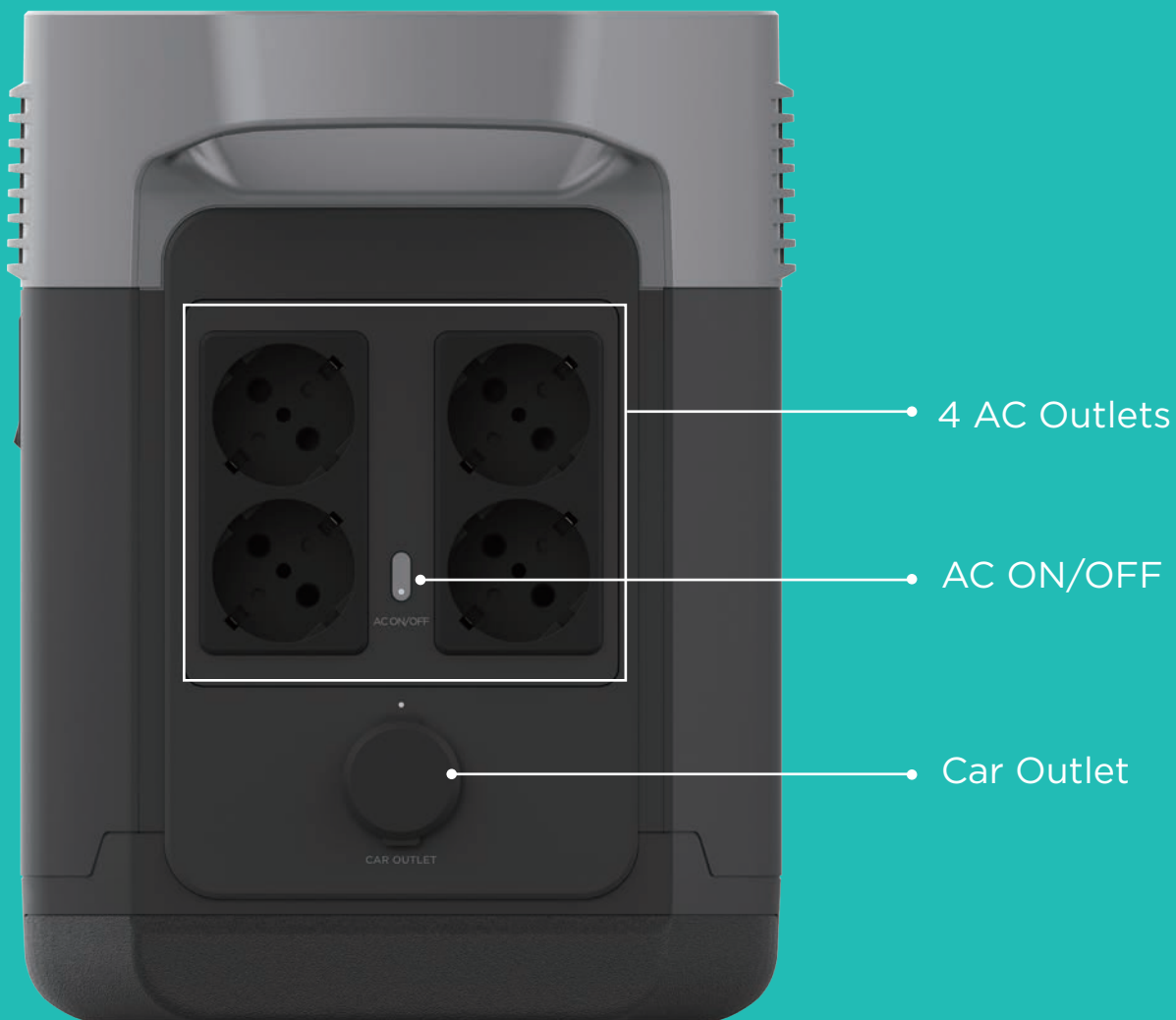




# 13 Devices

## Powered Simultaneously

DELTA is built to give you peace of mind. Bring DELTA to any party or into your living room and power up to 13 devices simultaneously. DELTA's system includes four regular USB ports, two 60-watt USB-C ports plus four wall outlets on the International edition and six wall outlets on the American edition. DELTA meets the standard of any wall outlet so you'll always feel right at home.



# 1260Wh Capacity

With DELTA, you're prepared for any emergency. It's safe, easy to use, and gasoline-free. Run fridges, lights, medical devices, and other essentials, all with the flip of a switch.







A power outage doesn't have to cause distress for families who rely on medical devices, such as a CPAP machine or a medical fridge. With DELTA, you're always well prepared for the unexpected.



# Compatible With Any Solar Installation

## Universal Solar Input

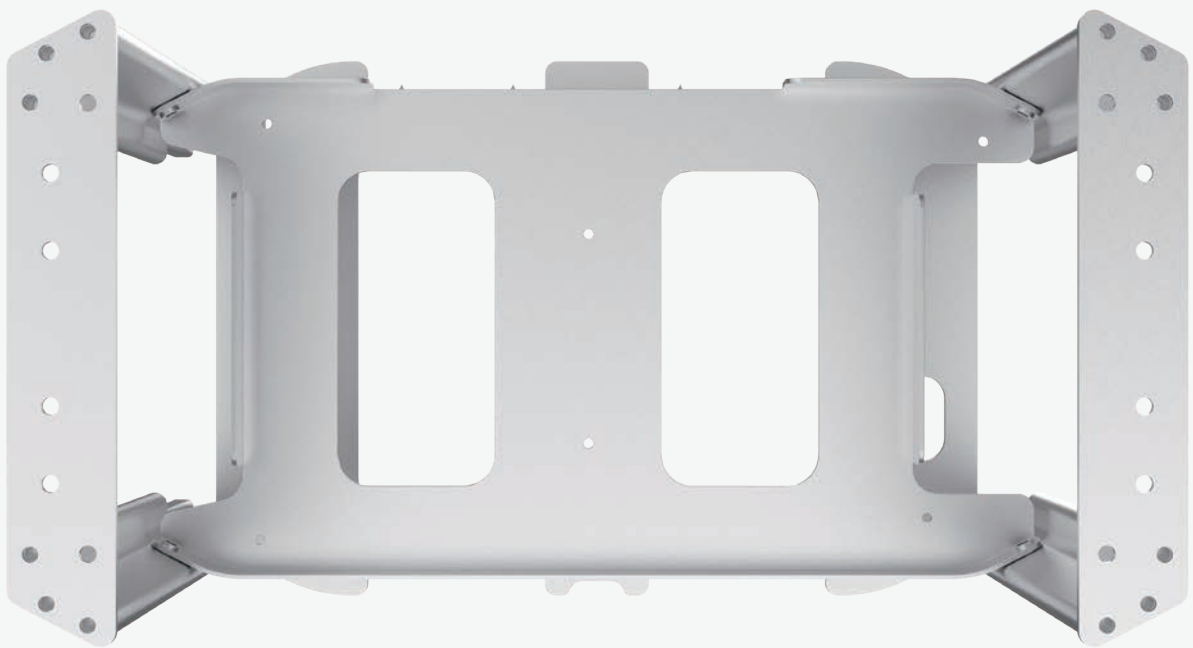
Harness the power of the sun by recharging DELTA with solar. Power everything you need to live life off the grid or back up your home in an emergency with a portable solar panel.

DELTA is compatible with any solar panels on the market. In perfect sunlight and 400W of solar panels, DELTA can be fully recharged in just four hours. DELTA is even able to be hooked up to an already existing solar roof installation.



# Aerospace-grade Aluminum and High-strength Steel

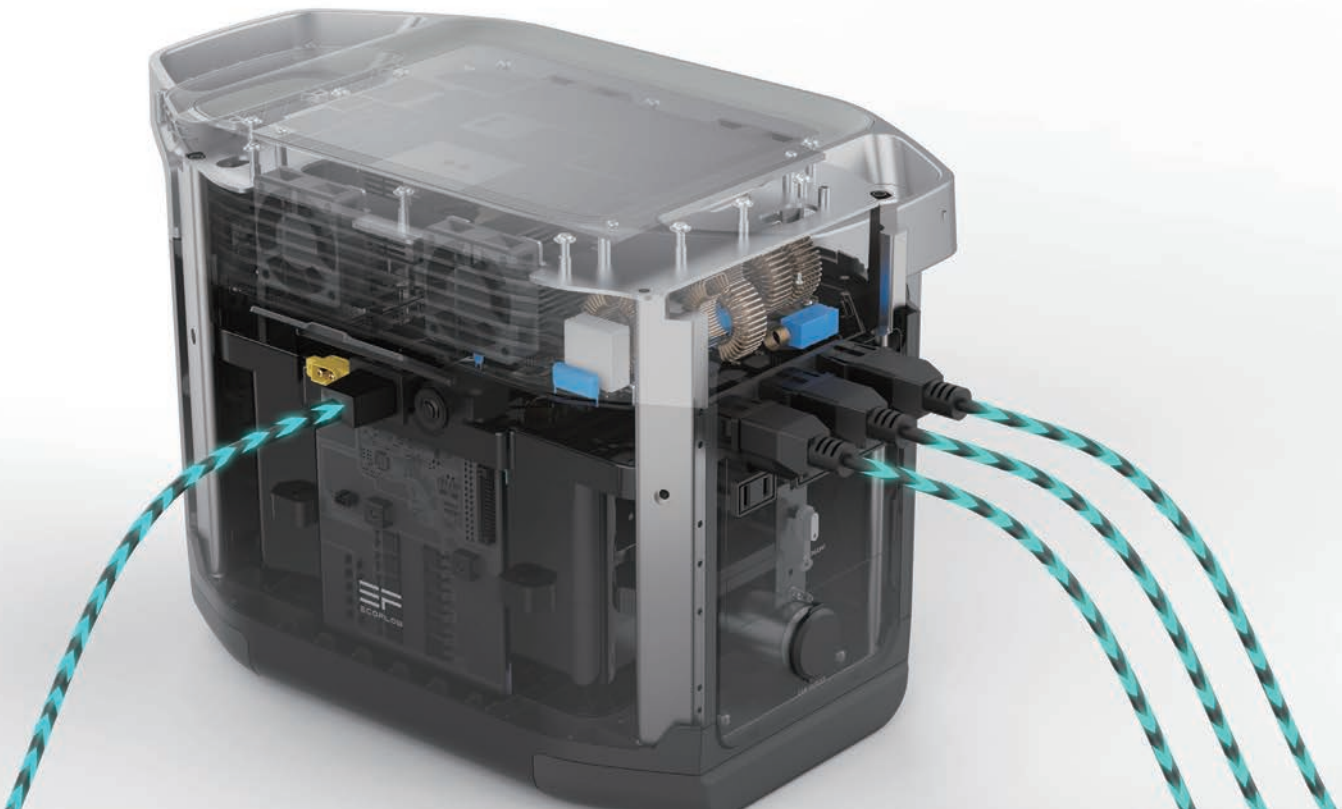
Rugged As Any Tool In The Shed



## Rigid structure

DELTA was strategically designed to have a low, solid center of gravity, mitigating rollover risk. In addition, it is made with aerospace-grade aluminum and high-strength steel to achieve maximum strength and durability.

# EcoFlow's Patented X-STREAM Charge Technology



The Power Management System converts DC to AC, and AC to DC in the most efficient way, allowing you to charge DELTA fully in just two hours. It has protective measures in place, which extends the power surge up to 3300W and prevents overload.



# EcoFlow's Battery Management System



Inside DELTA, there are 140 lithium-ion battery cells. To extend the performance, life-cycle and shelf-life of DELTA, we've developed our own proprietary Battery Management System. The Battery Management System regulates all the lithium-ion batteries inside DELTA and takes care of the batteries health individually using AI algorithms.

# Uninterruptible Power Supply (UPS)



In case of an outage, the UPS feature comes in handy. When DELTA detects a power failure, it automatically kicks into gear, which allows a computer or any of your most sensitive utilities that you can't afford to lose to keep running.



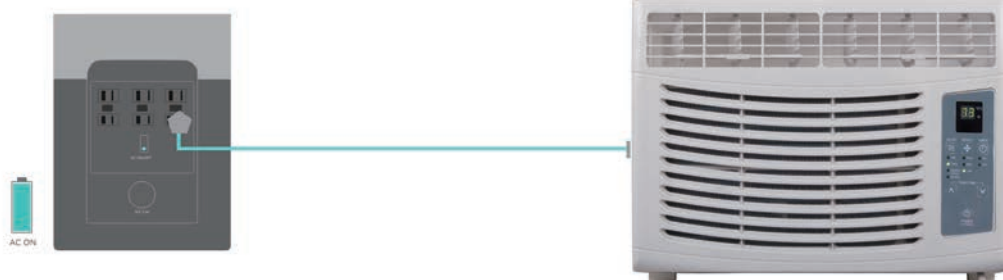
# Chainable for Capacity

DELTA can be chained to expand capacity. In order to expand DELTA capacity, all the DELTA should be full battery.

## Air Conditioner 5000 BTU

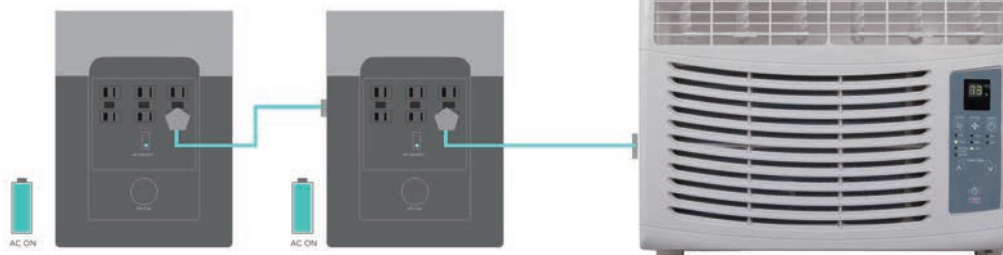
### 0.7-3.3 Hours

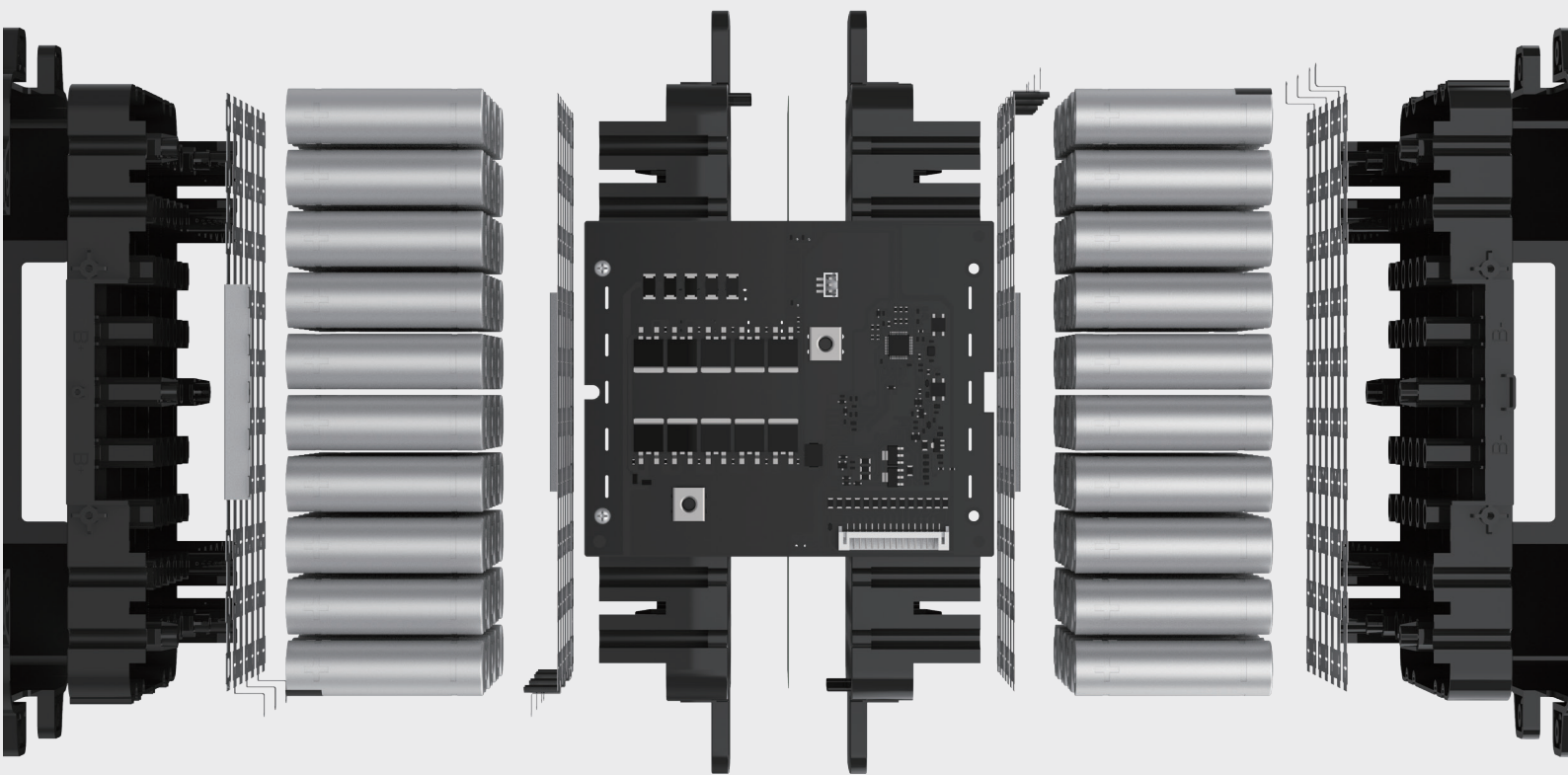
Running Time



### 1.4-6.6 Hours

Running Time





# 2 Years

## Battery Warranty

Reliable After Sales Service

---



# DELTA Spec Sheet



## Spec

## DELTA1300

Capacity	1260Wh (50.4V )
Dimension	15.7 x 8.3 x 10.6in (40 x 21 x 27cm)
Net Weight	30.9lbs (14kg)
Charge Temperature	32-113°F (0-45°C)
Discharge Temperature	-4-113°F (-20-45°C)
Testing and Certifications	UL Standard CE FCC RoHS PSE
Input	<b>AC Charge Input Power</b> X-STREAM Charge 1200W max  <b>AC Charge Input Voltage</b> 100-120Vac (50Hz/60Hz) (Int'l Version 220-240V)  <b>Solar Charge Input</b> 400W 10-65V DC 10A max  <b>Car Charge Input</b> 12V/24V DC 10A max

# DELTA Spec Sheet



## Output

### AC Output (x6)

#### Full Sine Wave

1800W (Surge 3300W)  
total, 120V( 60Hz)  
(Int'l Version ACx4  
230V 50Hz)

### USB-A Output (x2)

12W per port, 5V, 2.4A max

### USB-A Fast Charge (x2)

28W per port, 5V DC, 9V DC,  
12V DC, 2.4A max

### USB-C Output (x2)

60W per port, 5V DC, 9V DC,  
12V DC, 20V DC, 3A max

### Car Power Output (x1)

108.8W, 13.6V DC, 8A max

## Cell Chemistry

Lithium-ion

## Cell Type

18650

## Shelf Life

1 Year (after fully charged)

## Life Span

800 Cycles (60%)



